

MICROZONAZIONE SISMICA

Carta di microzonazione sismica –

$H_{SM} 0,5 - 1,5 s$ 1/2

scala 1:5.000

Regione Emilia–Romagna

Comune di Bibbiano



Regione
Emilia-Romagna


Soggetto realizzatore


Direttori tecnici:
Dr. Geol. Carlo Caleffi
Dr. Geol. Francesco Cerutti

Data
Aprile 2025


MS3


Legenda

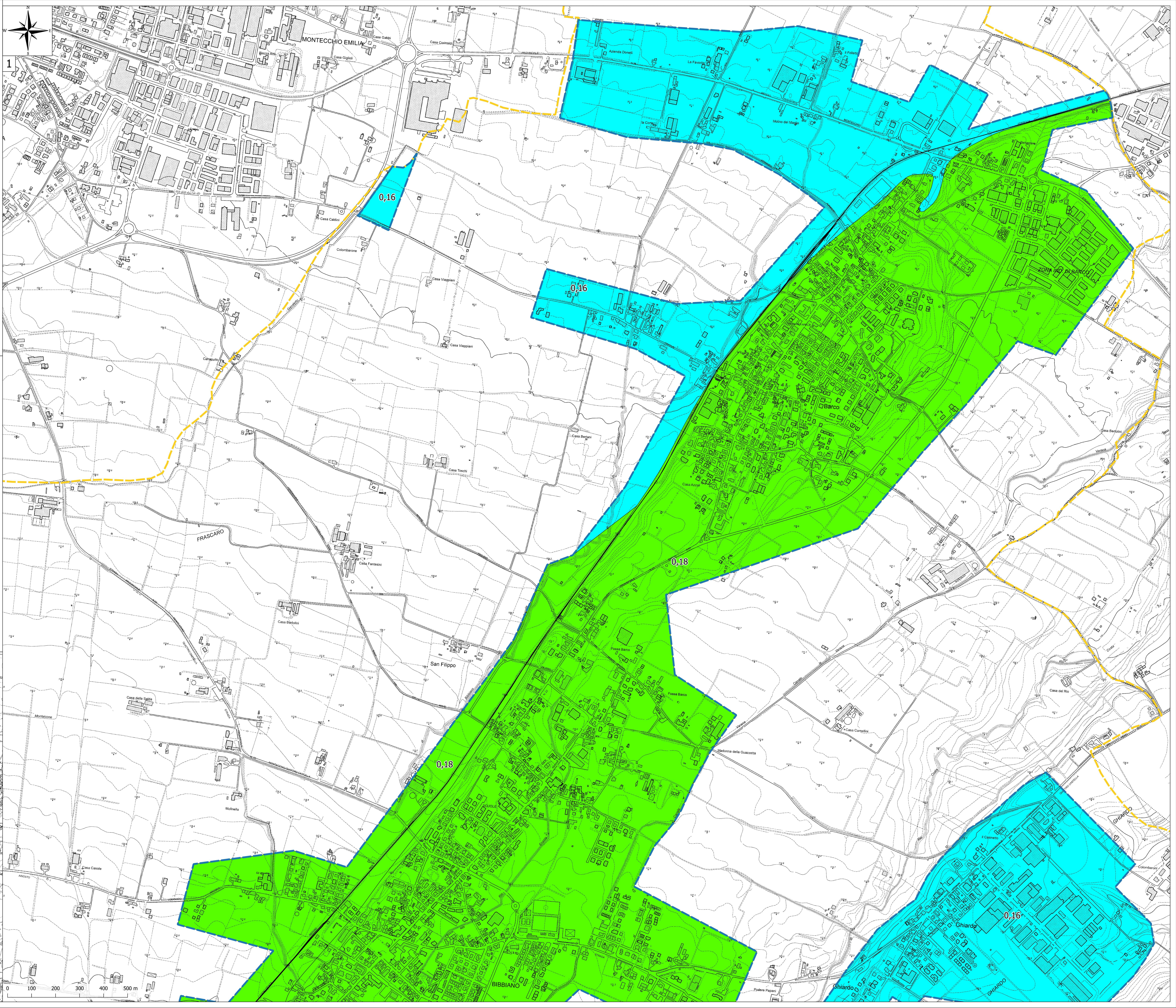
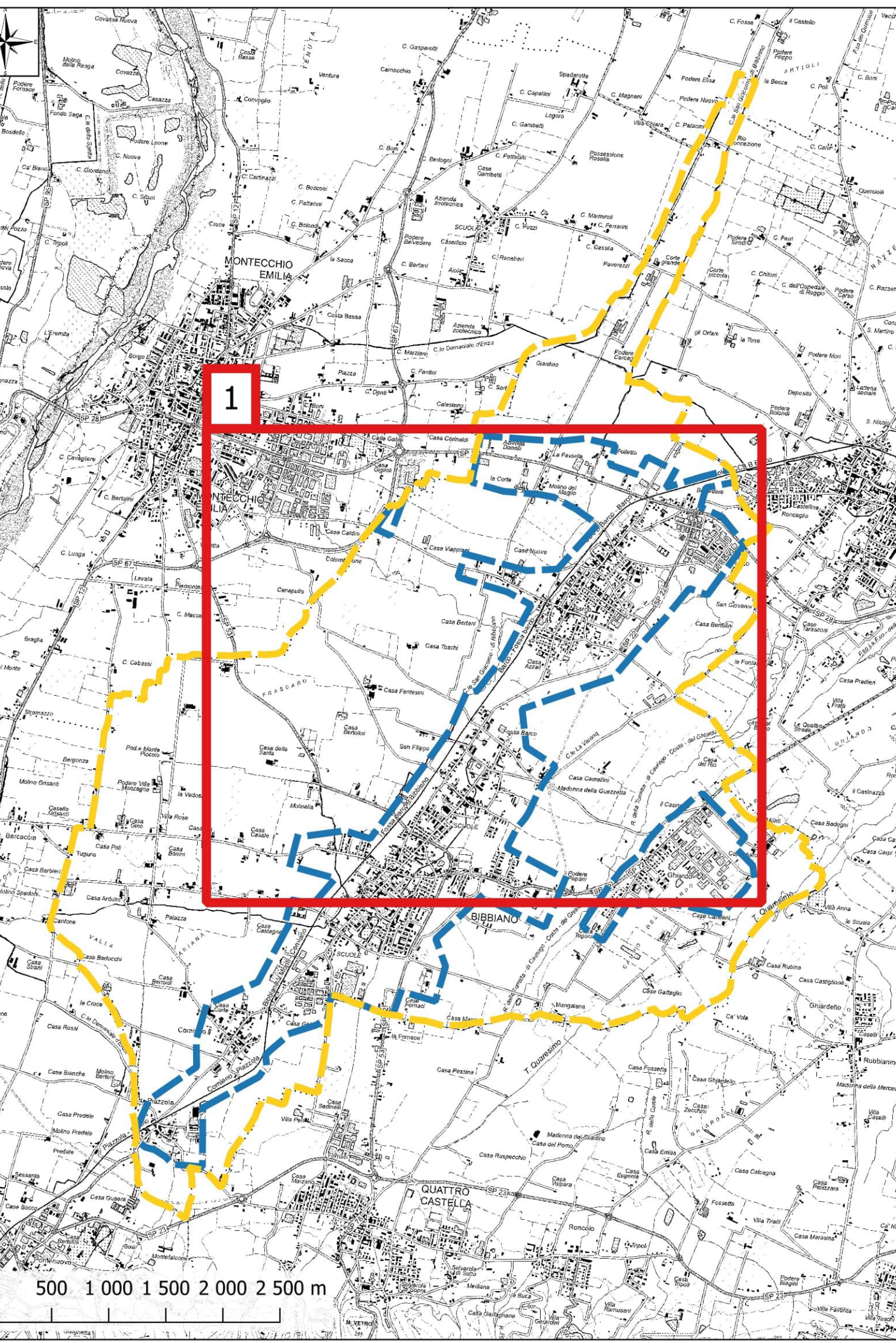
 Confine comunale

 Aree oggetto di Microzonazione Sismica

Zone stabili suscettibili di amplificazioni locali

 $H 0,5-1,5 s - 0,10 - 0,16 g$

 $H 0,5-1,5 s - 0,17 - 0,22 g$



MICROZONAZIONE SISMICA


Carta di microzonazione sismica –

$H_{SM} 0,5 - 1,5 s \quad 2/2$

scala 1:5.000


Regione Emilia–Romagna

Comune di Bibbiano



Regione
Emilia-Romagna

Soggetto realizzatore


Direttori tecnici:
Dr. Geol. Carlo Caleffi
Dr. Geol. Francesco Cerutti


Dr. Geol. Matteo Balsi
Dr.ssa Olga Brontesi
Dr. Geol. Alessandro Ferrari
Dr.ssa Geol. Melinda Raimondo


Data

Aprile 2025


MS3


Legenda

 Confine comunale

 Aree oggetto di Microzonazione Sismica

Zone stabili suscettibili di amplificazioni locali

 $H 0,5-1,5 s - 0,10 - 0,16 g$

 $H 0,5-1,5 s - 0,17 - 0,22 g$

